



SERIES 8200 FABRICATED SLIDE GATES

TECHNICAL DATA SHEET



Series 8200 Fabricated Slide Gates

Fabricated Slide Gates

Features

- Standard and custom sizes to fit most applications.
- Four material options to meet variable weight and corrosion resistant requirements.
- Effective, easy to use mounting and seal options.
- Rugged self-contained and non self-contained construction options.
- Smooth operating handwheel lifts are standard. Gear operated lifts and bearing lifts are optional, or used when friction loads require them.

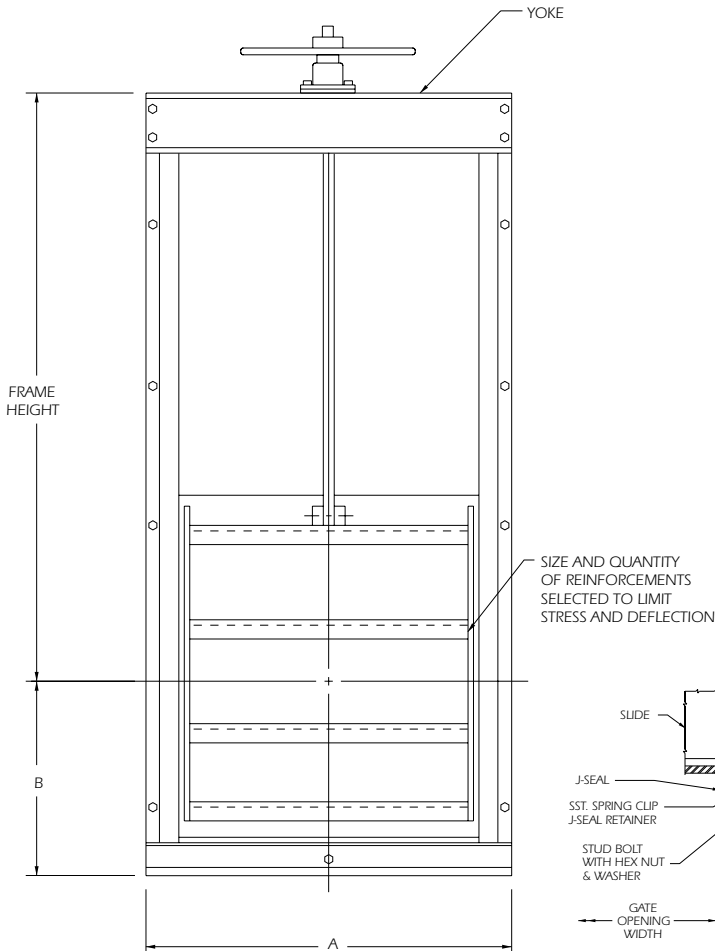
Material Options

Materials	Application
Carbon Steel	These steel gates can be gilt blast cleaned and painted to your specifications. Used where corrosion is unlikely.
Galvanized Carbon Steel	Used where an economical gate is needed but painting does not provide adequate protection against corrosion.
Stainless Steel	Made from Type 304, 304L, or 316 Stainless, or 316L Stainless Steel. Used when corrosive conditions dictate added protection.
Aluminum	Combines light weight with corrosion resistance.

Application

Used where cost effective flow control is required. Slide gates utilize water pressure and seal design to seat the slide. Slide gates can fit a wide variety of structures and sizes. Can be used in agriculture, flood control, or municipal.

SPECIFICATIONS



Available Operating Ranges

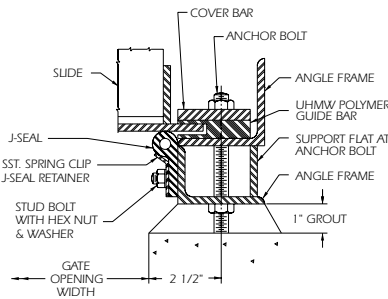
Standard Seating Heads - 5 ft. and 10 ft. Maximum Seating Head - 20 ft. (specify)

Installation

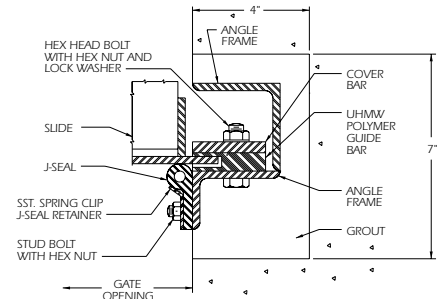
Mounted to headwall or in a channel.

Options

- Carbon Steel, Galvanized Carbon Steel, Stainless Steel or Aluminum.
- Bearing, Handwheel or Gear operated lifts.
- Self contained or non self-contained construction.
- U.H.M.W. Poly Liner.
- J-Seals.
- Stainless Steel or Cold Finish Steel stem.



Wall Mounted



Channel Mounted

Fabricated Slide Gates – Self-Contained

Width X Height	Carbon Steel & Galvanized		Stainless Steel		Aluminum		Recommended			Minimum Frame Height (H)
	A	B	A	B	A	B	Stem Diameter	Model	Lift Diameter	
12 x 12	20.00	10.00	20.00	10.00	21.50	10.00	1.12	H-1	10	5
12 x 24	20.00	16.00	20.00	16.00	21.50	16.00	1.12	H-1	10	5
18 x 18	26.00	13.00	26.00	13.00	27.50	13.00	1.12	H-1	10	5
18 x 30	26.00	19.00	26.00	19.00	27.50	19.00	1.12	H-1	10	5
24 x 24	32.00	16.00	33.50	16.00	33.50	16.00	1.12	H-1	10	5
24 x 36	32.00	22.00	32.00	22.00	33.50	22.00	1.12	H-1	10	5
30 x 30	38.00	19.00	38.00	19.00	39.50	19.00	1.12	H-1	10	5
30 x 42	38.00	25.00	38.00	25.00	39.50	25.00	1.50	H-2	18	6
36 x 36	44.00	22.00	44.00	22.00	45.50	22.00	1.12	H-1	24	5
36 x 48	44.00	28.00	44.00	29.00	45.50	28.00	1.50	H-2	18	7
42 x 42	50.00	25.00	50.00	25.00	51.50	25.00	1.50	H-2	24	6
42 x 60	50.00	34.00	50.00	34.00	51.50	34.00	2.00	HB	24	8
48 x 36	56.00	22.00	56.00	22.00	57.50	22.00	1.12	H-2	18	5
48 x 48	56.00	28.00	56.00	28.00	57.50	28.00	1.50	H-2	30	7

*Custom sizes from 6"x 6" opening to 72" x 72" opening in 1" increments. Larger gates available through our Hydro Gate division. Call for information.



Fresno Valves & Castings, Inc.

7736 East Springfield Avenue
P.O. Box 40, Selma, CA 93662, U.S.A.

(800) 333-1658

www.fresnovalves.com