



## SERIES 6700 COMBINATION GATE

### TECHNICAL DATA SHEET



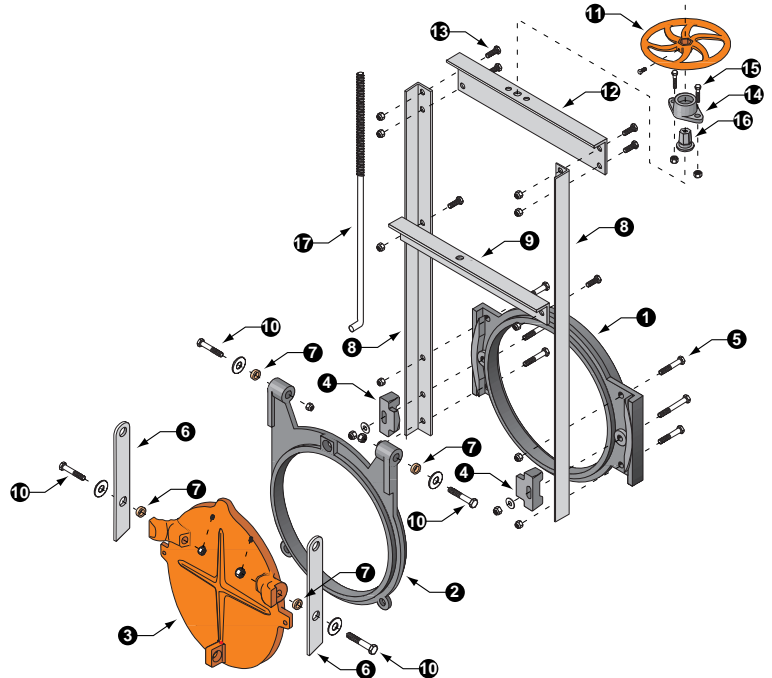
Series 6700 Combination Gate

#### Features

- Durable fabricated steel body.
- Simple & economic design.
- Flanged ends for easy installation.
- Inspection port provides easy access to internal components.
- Stainless steel hinge construction for added corrosion resistance.
- Precision machined seat & rubber coated cover provide positive seal.
- Available with epoxy coated steel or galvanized steel body.

#### Material Specifications

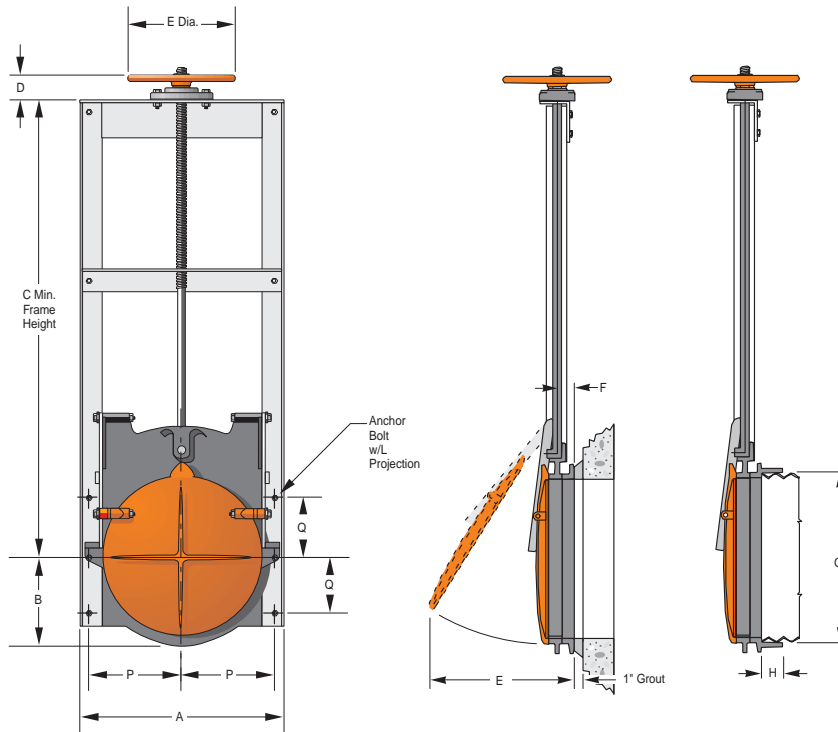
Item	Description	Material	Specification
1	Seat	Cast Iron	ASTM A126, Class B
2	Middle Ring	Cast Iron	ASTM A126, Class B
3	Cover	Cast Iron	ASTM A126, Class B
4	Wedges	Cast Iron	ASTM A126, Class B
5	Wedge Bolts, Nuts & Washers	Steel, Plated	ASTM A307, A164
6	Links	Steel, Galvanized	ASTM A36, A123
7	Bushings	Bronze	ASTM B16
8	Slide Rail	Steel, Galvanized	ASTM A36, A123
9	Stem Support	Steel, Galvanized	ASTM A36, A123
10	Hinge Bolts, Nuts & Washers	Steel, Plated	ASTM A307, A164
11	Handwheel	Cast Iron	ASTM A126, Class B
12	Head Angle	Steel, Galvanized	ASTM A36, A123
13	Head Angle Bolts & Nuts	Steel, Plated	ASTM A307, A164
14	Keeper	Cast Iron	ASTM A126, Class B
15	Keeper Bolts & Nuts	Steel, Plated	ASTM A307, A164
16	Lift Nut	Bronze	ASTM B584, Alloy 836
17	Stem	Steel	ASTM A108, Grade 1045



#### Application

The Series 6700 Combination Gate combines the features of a slide gate and flap gate. In the closed position it operates as a flap gate, permitting outflow while preventing backflow. A handwheel lift is used to raise and lower the flap.

## SERIES 6700 COMBINATION GATE



### Pressure Rating

Maximum seating head 10'.

### Installation

The Series 6600 Slide Gate is normally installed on corrugated steel pipe or bolted to a concrete head wall. When attaching to corrugated pipe, you may either bolt directly to the spigot back seat, or use a rod and harness assembly.

### Options

Available in painted, galvanized or stainless steel frame models. Stainless steel links & bushings also available. Rod & harness assembly & various geared lifts available, both manual & electric.

### Dimensional Information

Gate Diameter (Inches)	Dimensions (Inches)										Anchor Bolt Data			Lift Data		
	A	B	C	D	E	F	G	H	J	K	Qty.	Size	L	Lift Type	H/wheel Diameter	Stem Diameter
18	25.50	10.88	38.00	2.88	25.81	2.88	19.25	1.50	10.50	7.00	4.00	5/7x12	4.50	H1	14.00	1-1/8
24	32.50	13.75	38.00	2.88	33.12	2.88	25.25	1.20	13.50	7.00	4.00	5/8x12	4.50	H1	14.00	1-1/8
30	39.38	17.12	58.00	2.88	41.38	3.75	31.25	2.00	16.88	12.00	4.00	3/4x12	5.25	H1	14.00	1-1/8
36	45.38	20.12	67.00	3.50	48.88	3.75	27.25	2.00	19.88	12.00	4.00	3/4x12	5.25	H2	24.00	1-1/2
42	51.38	23.12	76.50	3.50	57.00	4.12	43.38	2.00	22.88	16.00	4.00	3/4x12	5.50	H2	30.00	1-1/2
48	57.38	26.12	86.00	6.12	64.38	4.25	49.38	2.00	25.88	16.00	4.00	3/4x12	5.50	HB	24.00	1-1/2
60	69.50	33.50	106.00	6.12	79.63	5.38	61.38	2.00	32.50	20.00	4.00	1x12	5.50	HB	30.00	2.00



**Fresno Valves & Castings, Inc.**

7736 East Springfield Avenue  
P.O. Box 40, Selma, CA 93662, U.S.A.

**(800) 333-1658**

www.fresnovalves.com