

SERIES 4000 LINE GATE VALVES



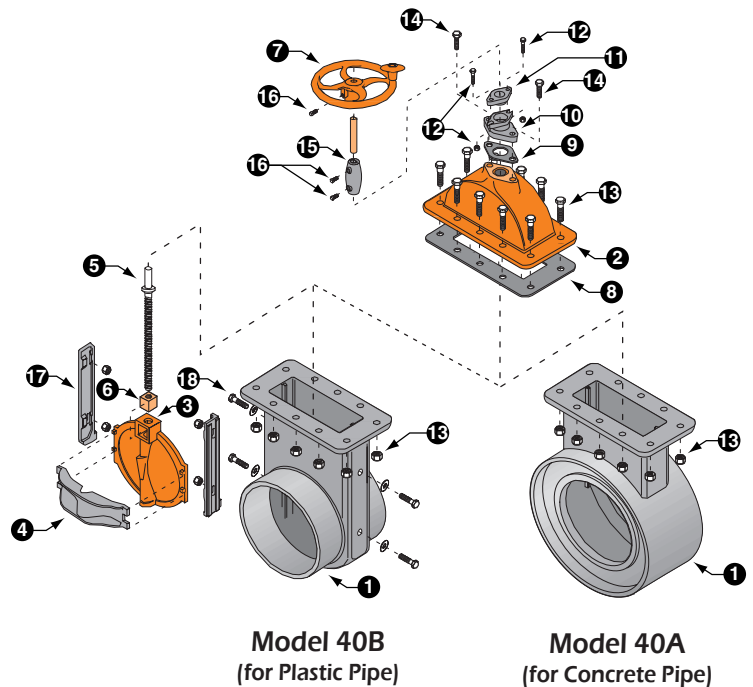
Features

- Precision machined seating surfaces provide watertight seal.
- Bronze lift nut and stem ensure smooth operation and corrosion resistance.
- Heavy-wall Cast Iron construction for lasting performance.
- Removable bonnet allows easy access to internal components.
- Single center wedge design distributes uniform pressure across the seat.

Material Specifications

Item	Description	Material	Specification
1	Body	Cast Iron	ASTM A126, Class B
2	Top	Cast Iron	ASTM A126, Class B
3	Slide	Cast Iron	ASTM A126, Class B
4	Bar	Brass	ASTM B584, C93200
5	Stem	Brass	ASTM B584, C93200
6	Lift Nut	Cast Iron	ASTM A126, Class B
7	Handwheel w/knob	Cast Iron	ASTM A126, Class B
8	Body Gasket	Steel, plated	ASTM A307, A164
9	Top Gasket	Cast Iron	ASTM A126, Class B
10	Stuffing Box	Cast Iron	ASTM A126, Class B
11	Gland	Cast Iron	ASTM A126, Class B
12	Gland Bolts, Nuts	Steel, plated	ASTM A307, A164
13	Body Bolts & Nuts	Steel, plated	ASTM A307, A164
14	Stuffing Box Mounting Bolts	Steel, plated	ASTM A307, A164
15	Handle Coupler	Cast Iron	ASTM A126, Class B
16	Set Screws	Cast Iron	ASTM A126, Class B
17*	Removable Guides	Cast Iron	ASTM A126, Class B
18*	Guide Bolts & Nuts, Wshrs.	Steel, galvanized	ASTM

*Model 40B



Applications

The Series 4000 PW & YW Gate Valves are in-line gate valves used to shut off and regulate distribution lines, at pumps and in field irrigation systems.

SPECIFICATIONS

Pressure Rating

Maximum seating60' (26 psi)
 Maximum unseating 10' (4.5 psi)

Installation

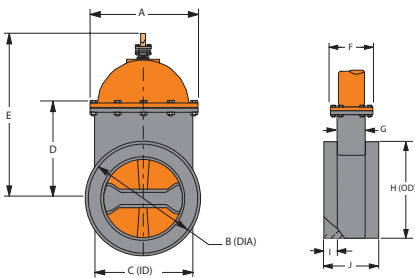
The Model 40A Valve is designed for use with concrete pipe. The hub ends allow for mortared installation to the ends of the pipe.

The Model 40B Valve is designed for use with plastic pipe, the outside of the valve stubs are epoxied to the inside of the plastic pipe. Draw bands may be used to provide additional strength at the joint.

Options

- Bronze seating surfaces
- Rising Stem
- Custom-sized steel stubs for PVC or steel pipe
- 25 lb. or 125 lb. flanged ends
- Stem extensions
- Special coatings
- 2" square operating nut

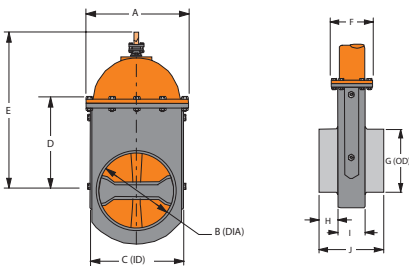
Dimensional Information



Model 40A
(for Concrete Pipe)

Gate Size (Inches)	Dimensions (Inches)									
	A	B	C	D	E	F	G	H	I	J
8	12.00	7.88	11.06	9.25	22.53	6.00	3.75	11.56	1.50	6.62
10	14.38	10.00	13.88	12.25	24.50	6.38	4.19	14.50	1.62	7.25
12	16.62	12.12	16.00	14.19	29.44	7.31	4.75	16.62	1.75	8.25
14	19.50	14.00	18.12	16.12	32.38	7.50	4.88	18.75	1.75	8.38
16	21.25	16.00	20.00	17.12	34.38	7.88	5.38	20.75	1.75	8.75
18	24.00	17.94	22.88	19.12	38.50	9.00	5.81	23.50	2.00	10.00
20	26.50	20.00	26.00	21.44	47.22	10.00	7.00	27.06	2.25	11.50
24	29.75	24.00	31.25	24.88	51.75	11.62	8.75	32.50	2.38	15.88

Dimensional Information



Model 40B
(for Plastic Pipe)

Gate Size (Inches)	Dimensions (Inches)									
	A	B	C	D	E	F	G	H	I	J
6	9.62	5.50	8.31	6.88	18.25	5.75	5.88	2.50	3.81	8.75
8	12.00	7.44	10.25	8.88	20.53	6.00	7.88	2.50	4.00	8.94
10	14.38	9.31	12.50	12.19	24.66	6.38	9.88	4.00	4.00	12.12
12	16.62	11.31	14.75	13.94	28.47	7.31	11.88	4.75	4.75	11.88
15	19.50	14.44	17.50	15.81	32.03	7.50	14.88	4.88	4.88	11.75
18	24.00	17.94	22.88	19.12	38.50	9.00	17.88	4.50	5.81	16.12
20	26.50	20.00	26.00	21.44	47.22	10.00	19.88	4.00	7.00	17.25
24	29.75	24.00	31.25	24.88	51.75	11.62	23.88	3.50	8.75	19.62



Fresno Valves & Castings, Inc.
 7736 East Springfield Avenue
 P.O. Box 40, Selma, CA 93662, U.S.A.
 (800) 333-1658
www.fresnovalves.com