

SERIES 3100 PRESSURE RELIEF VALVE

TECHNICAL DATA SHEET



Series 3100 PR Valve

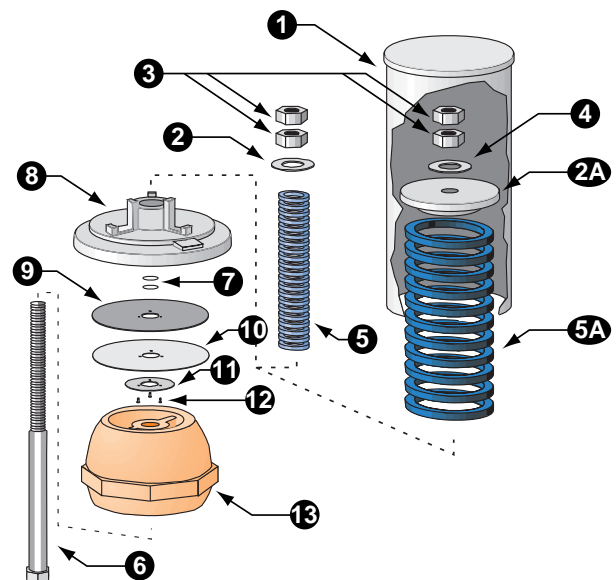
Features

- Provides economical pressure surge protection for irrigation systems.
- Spring loaded design is simple and dependable.
- Adjustable pressure setting maximizes performance for individual applications.
- Cast Iron body and Stainless Steel shaft offer strength and corrosion resistance.
- Standard NPT pipe threads for ease of installation.
- Factory preset and tested to ensure accurate, sensitive operation.
- Stainless Steel guide rod and Teflon seal provide smooth, reliable performance.
- Tamper-proof Aluminum cover protects components from weather and vandalism. (Model PR 900 only)
- Oil tempered coil springs provide responsive operation for individual pressure range.

Material Specifications

| Item | Description | Material | Specification |
|------|------------------|-----------------|--------------------------|
| 1 | *Cover | Aluminum | ASTM B209, Alloy 6061 |
| 2 | Spring Retainer | Steel, Plated | ASTM A307, A164 |
| 2A | *Spring Retainer | Cast Aluminum | ASTM B26-65, Alloy SC64D |
| 3 | Nuts, Adjusting | Steel, Plated | ASTM A307, A164 |
| 4 | Washer | Steel, Plated | ASTM A307, A164 |
| 5 | Spring | Steel | N/A |
| 5A | *Spring | Steel | N/A |
| 6 | Shaft | Stainless Steel | ASTM A581, Type 304 |
| 7 | O-Rings | Buna-N | ASTM D2000 |
| 8 | Seal Holder | Cast Aluminum | ASTM B26-65, Alloy SC64D |
| 9 | Seal Disk | Rubber | N/A |
| 10 | Disk | Teflon Cloth | N/A |
| 11 | Seal Retainer | Aluminum | ASTM B209, Alloy 6061 |
| 12 | Screws | Stainless Steel | ASTM A581, Type 304 |
| 13 | Base | Cast Iron | ASTM A126, Class B |

*Model PR 900 only

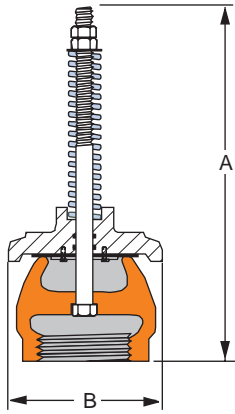


Applications

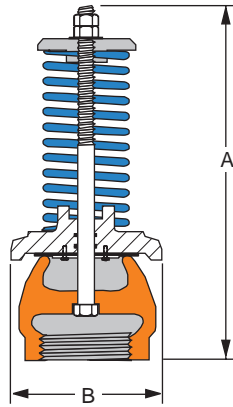
The Series 3100 Pressure Relief Valves are designed to provide effective pressure surge protection for irrigation systems. These valves reliably protect your system from costly damage caused by pressure surges.

SPECIFICATIONS

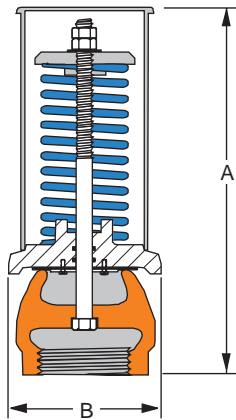
SERIES 3100 PRESSURE RELIEF VALVE



Sizes 2"-2-1/2"
Model PR 600



Sizes 3" - 4"
Model PR 600



Sizes 3" - 6"
Model PR 900

Pressure Rating

Designed for use between 11 and 120 psi.

Installation

The Series 3100 Pressure Relief Valve is normally installed at the pump discharge, on the main pipeline or at the filter inlet.

Options

- Available in BSPT (British) threads. Factory preset relief point.

Dimensional Information

| Model PR 600 | | | |
|---------------|---------------------|------|---------------|
| Size (Inches) | Dimensions (Inches) | | Weight (Lbs.) |
| | A | B | |
| 2 | 14.00 | 5.25 | 8.5 |
| 2-1/2 | 14.00 | 5.25 | 8.5 |
| 3 | 14.00 | 5.25 | 9.0 |
| 4 | 14.50 | 7.00 | 13.0 |

| Model PR 900 | | | |
|---------------|---------------------|-------|---------------|
| Size (Inches) | Dimensions (Inches) | | Weight (Lbs.) |
| | A | B | |
| 3 | 15.25 | 5.25 | 14.0 |
| 4 | 15.25 | 7.00 | 27.0 |
| 6 | 21.00 | 10.88 | 74.0 |



Fresno Valves & Castings, Inc.

7736 East Springfield Avenue
P.O. Box 40, Selma, CA 93662, U.S.A.

(800) 333-1658

www.fresnovalves.com