

## SERIES 3100 PRESSURE RELIEF VALVE



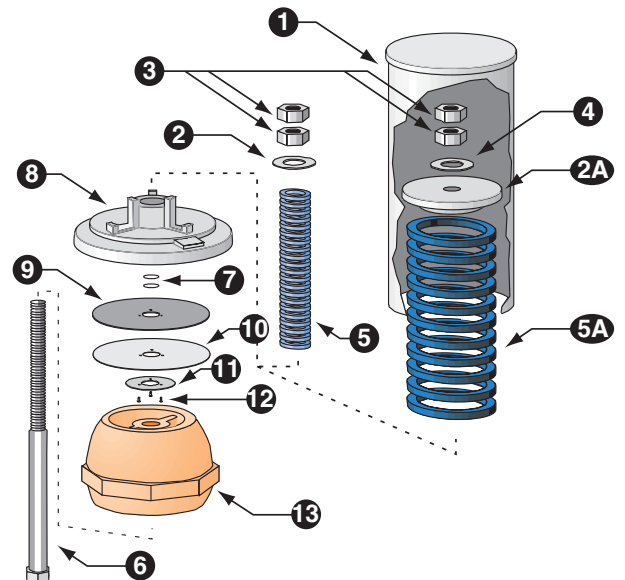
### Features

- Provides economical pressure surge protection for irrigation systems.
- Spring loaded design is simple and dependable.
- Adjustable pressure setting maximizes performance for individual applications.
- Cast iron body and stainless steel shaft offer strength and corrosion resistance.
- Standard NPT pipe threads for ease of installation.
- Factory preset and tested to ensure accurate, sensitive operation.
- Stainless steel guide rod and Teflon seal provide smooth, reliable performance.
- Tamper-proof aluminum cover protects components from weather and vandalism. (Model PR 900 only)
- Oil tempered coil springs provide responsive operation for individual pressure range.

### Material Specifications

Item	Description	Material	Specification
1	*Cover	Aluminum	ASTM B209, Alloy 6061
2	Spring Retainer	Steel, Plated	ASTM A307, A164
2A	*Spring Retainer	Cast Aluminum	ASTM B26-65, Alloy SC64D
3	Nuts, Adjusting	Steel, Plated	ASTM A307, A164
4	Washer	Steel, Plated	ASTM A307, A164
5	Spring	Steel	N/A
5A	*Spring	Steel	N/A
6	Shaft	Stainless Steel	ASTM A581, Type 304
7	O-Rings	Buna-N	ASTM D2000
8	Seal Holder	Cast Aluminum	ASTM B26-65, Alloy SC64D
9	Seal Disk	Rubber	N/A
10	Disk	Teflon Cloth	N/A
11	Seal Retainer	Aluminum	ASTM B209, Alloy 6061
12	Screws	Stainless Steel	ASTM A581, Type 304
13	Base	Cast Iron	ASTM A126, Class B*

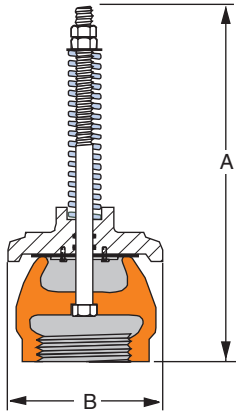
\*Model PR 900 only



### Application

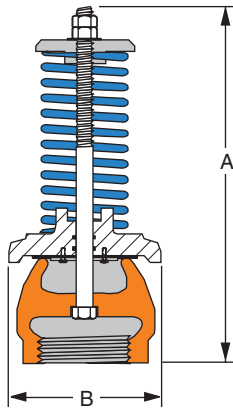
The Series 3100 Pressure Relief Valves are designed to provide effective pressure surge protection for irrigation systems. These valves reliably protect your system from costly damage caused by pressure surges.

# SPECIFICATIONS



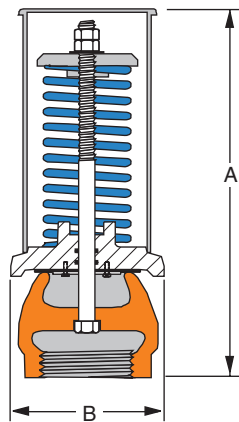
Sizes 2"-2-1/2"

**Model PR 600**



Sizes 3" - 4"

**Model PR 600**



Sizes 3" - 6"

**Model PR 900**

## Pressure Rating

Designed for use between 11 and 120 psi.

## Installation

The Series 3100 Pressure Relief Valve is normally installed at the pump discharge, on the main pipeline, or at the filter inlet.

## Options

- Available in BSPT (British Standard Pipe Thread).  
Factory preset relief point.

## Dimensional Information

Model PR 600			
Size (inches)	Dimensions (Inches)		Weight (lbs.)
	A	B	
2	14.00	5.25	8.5
2-1/2	14.00	5.25	8.5
3	14.00	5.25	9.0
4	14.50	7.00	13.0

Model PR 900			
Size (inches)	Dimensions (Inches)		Weight (lbs.)
	A	B	
3	15.25	5.25	14.0
4	15.25	7.00	27.0
6	21.00	10.88	74.0



Valves & Castings, Inc.

Specifications subject to change without notice.

Fresno Valves & Castings, Inc.  
7736 East Springfield Avenue  
P.O. Box 40, Selma, CA 93662, U.S.A.  
**(800) 333-1658**  
www.fresnovalves.com

Rev. 12/17