

## SERIES 2400 SW CLOVER VALVE

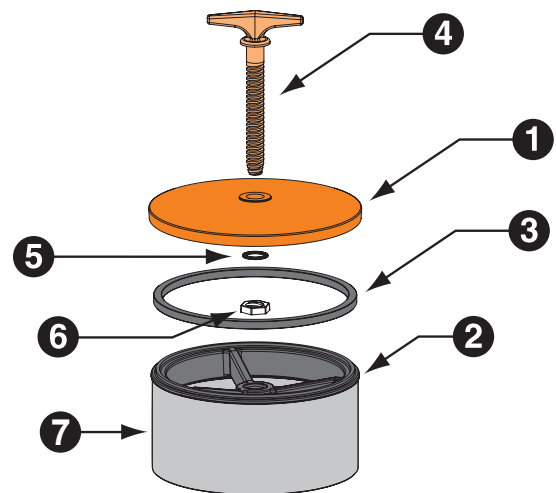


### Features

- Precision ground seat and rubber gasket ensures watertight seal.
- Heavy-duty cast iron frame and cover for durability.
- Cast-in-place bronze bushing won't pull out, and will provide a bronze to bronze operating thread.
- The vee or acme threaded brass screw is rugged and easy to operate.
- Easy to install on to the outside diameter of plastic irrigation pipe (PIP), or iron pipe size (IPS) plastic pipe.

### Material Specifications

Item	Description	Material	Specification
1	Cover (Lid)	Cast Iron	ASTM A126, Class B
2	Frame	Cast Iron	ASTM A126, Class B
3	Gasket	SBR	ASTM D2000
4	Screw	Brass	ASTM B584, C83600
5	Washer	Brass	ASTM B16
6	Nut	Brass	ASTM B584, C84400
7	Skirt	PVC	ASTM 1785



### Application

The Series 2400 Clover Valve is an overflow type valve designed for use in surface irrigation to provide reliable shut-off and regulation of flow from underground pipelines to irrigation furrows or checks. The Series 2400 may also be used in conjunction with distributing pots in vineyard and orchard applications. Clover Valves also provide effective level control and aeration in ponds or as drains for sumps or stand pipes. (Not designed to work with universal hydrant)

# SPECIFICATIONS

## Pressure Rating

Valve Sizes:

3" – 12" .....50 ft. (22 psi max.)

14" - 20" ..... 25 ft. (11 psi max.)

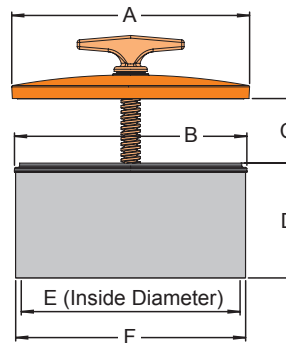
## Options

- 6" - 14" available with vee or acme thread.

## Installation

The Series 2400 Clover Valve offers an easy-to-install choice for overflow valves when using plastic pipe. These valves glue on to the outside diameter of plastic irrigation pipe (PIP), or iron-pipe-size (IPS) plastic pipe. Therefore, they are not affected by varying wall thickness due to different pressure ratings of PIP or different schedule ratings of IPS plastic pipe.

### SERIES 2400 CLOVER VALVE



### Dimensional Information

Nom. Valve Dia.	Dimensions (Inches)					
	A	B	C	D	E	F
2 IPS	2.88	2.88	1.00	2.50	2.39	2.83
4 IPS	4.80	5.00	1.00	2.93	4.52	5.00
5x6 PIP	5.80	6.75	1.50	4.37	6.16	6.63
5x6 IPS	5.80	6.75	1.50	4.37	6.65	6.90
6 PIP	6.86	6.75	2.50	4.37	6.16	6.63
6 IPS	6.86	6.75	2.50	4.37	6.65	6.90
8 PIP	9.37	9.00	2.00	4.87	8.19	8.63
8 IPS	9.37	9.00	2.00	4.87	8.66	9.05
10 PIP	11.12	10.88	3.00	5.37	10.23	10.75
10 IPS	11.12	10.88	3.00	5.37	10.78	11.10
12 PIP	12.99	12.88	3.00	5.87	12.27	12.75
12 IPS	12.99	12.88	3.00	5.87	12.78	13.20
14x15 PIP	15.25	16.23	3.00	6.97	15.34	16.00



Valves & Castings, Inc.

Specifications subject to change without notice.

Fresno Valves & Castings, Inc.

7736 East Springfield Avenue

P.O. Box 40, Selma, CA 93662, U.S.A.

(800) 333-1658

www.fresnovalves.com

Rev. 1/18