

OVERSHOT GATE



Safe, Effective Canal Control

Applications

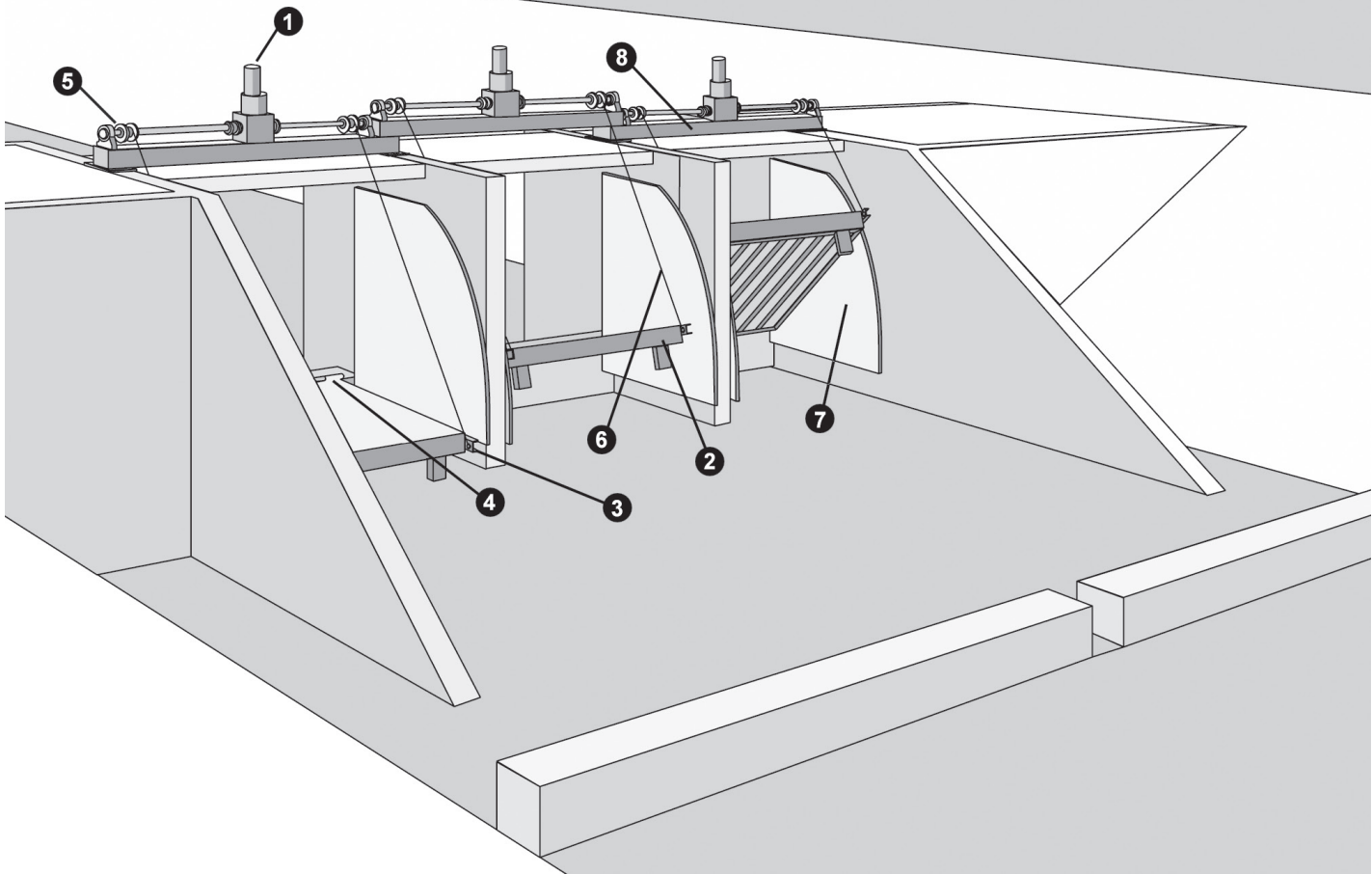
Fresno Overshot Gates effectively control upstream and downstream levels of canals. Improved flow control is achieved through the use of this fully adjustable, self-contained, overflow weir. Fresno Overshot Gates can be operated manually or electronically, with on-site or remote automation available. Versatility, efficiency and safety are the primary reasons the Fresno Overshot Gate is the method of choice for municipal, agricultural and industrial canal water control.

The Overshot Gate can be used in a variety of canal applications. This gate can be adapted to existing structures where check boards were previously used, or on a check site where there are existing concrete walls.

Features

- Custom engineered to fit most dimensions.
- Manual, electric or solar operation.
- Proven technology – Over 10 years successful operation.
- Safe, cost effective replacement of existing check boards.
- Reduced labor and chance of injury.
- Optional side rubbing panels ensure perfect fit - no wear, no leaks, no repairs.
- Available in aluminum, stainless steel or carbon steel materials.

SPECIFICATIONS



Note:

Fresno Overshot Gates are custom engineered. Consult your Fresno representative for design data for your specific application.

1. Gear Box

Fully enclosed, weatherproof, helical worm gear box with roller bearing mounted shafts. Oil bath lubrication.

2. Gate Leaf

Fabricated according to required size.

3. Lifting Pin

Stainless steel pin, available with pulley, if required.

4. Hinge Pin

Continuous piano style hinge.

5. Cable Drum

Grooved cable drum with internal cable clamp.

6. Cable

Stainless steel or galvanized wire rope with swedge socket.

7. Side Panel

Made according to gate size.

8. Hoist Yoke

Steel lifting device, fabricated to requirements.



Fresno Valves & Castings, Inc.
7736 East Springfield Avenue
P.O. Box 40, Selma, CA 93662, U.S.A.
(800) 333-1658
www.fresnovalves.com