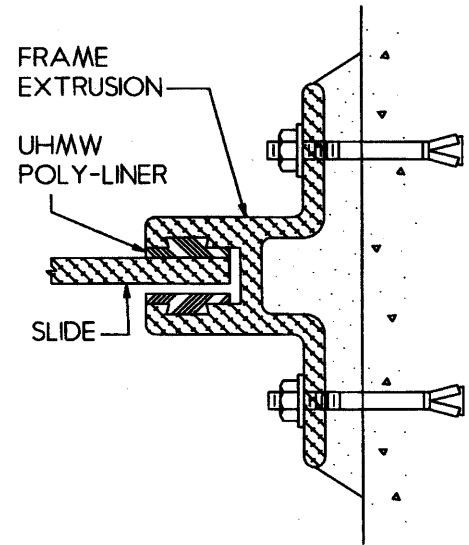
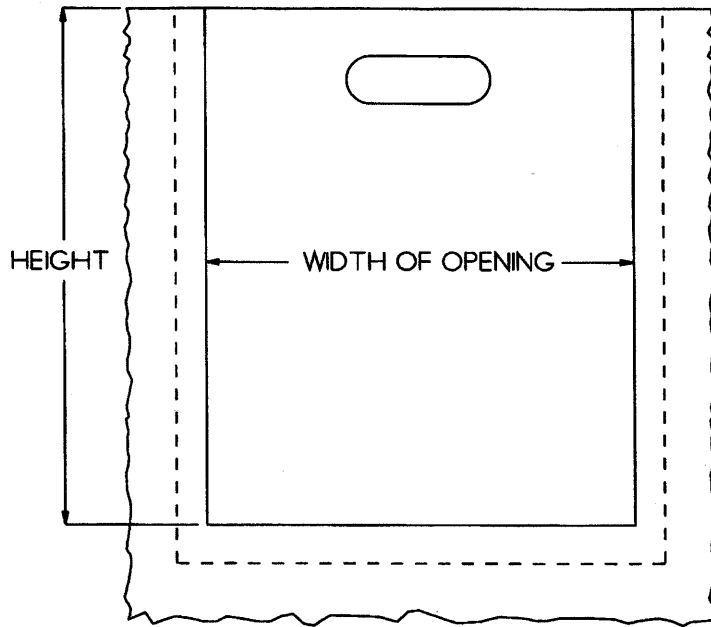


Aluminum Hand-Pull Gates

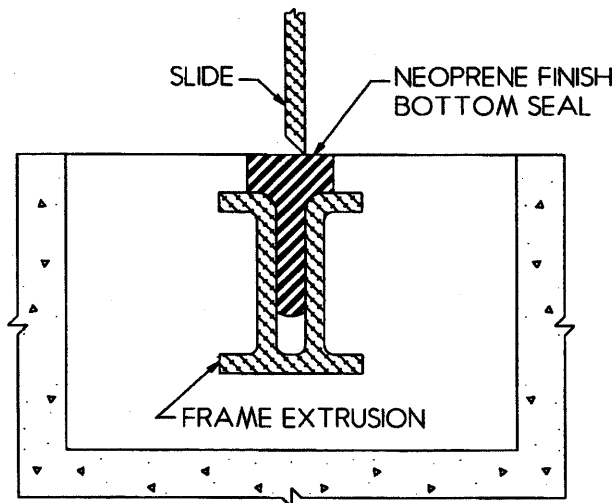
Fresno Valves & Castings manufactures several standard sizes of hand-pull or stop gates. An extruded metal section embeds in the side walls or is mounted on the face of the rectangular flume or conduit and acts as a guide for the gate slide. The gate consists of an aluminum plate reinforced if necessary with hand holes for manual opening of the gate.

A hand-pull gate is an economical way to divert water in rectangular channels.

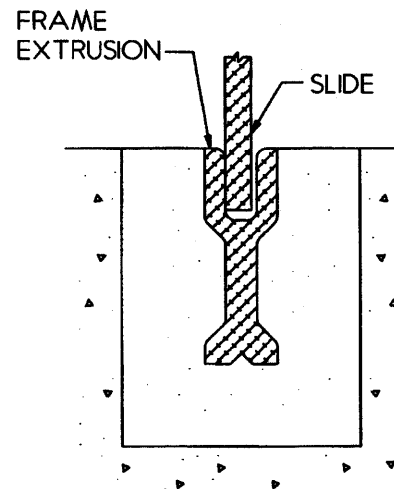
Material Specification - The slide guides, slide plate and any necessary reinforcing for Fresno Valves & Castings hand-pull gates are manufactured from aluminum meeting the requirements of ASTM Specification B209 Alloy or B308 Alloy 6061.



CHANNEL MOUNTED SIDE SECTION WITH POLYMER LINER



EMBEDDED FLUSH-BOTTOM



**EMBEDDED SIDE/BOTTOM
DETAIL WITHOUT
POLYMER LINER**