

SERIES 1200 BACKFLUSH RECYCLE SYSTEM



FLOW-GUARD
 Filtration Products

Backflush Recycle System

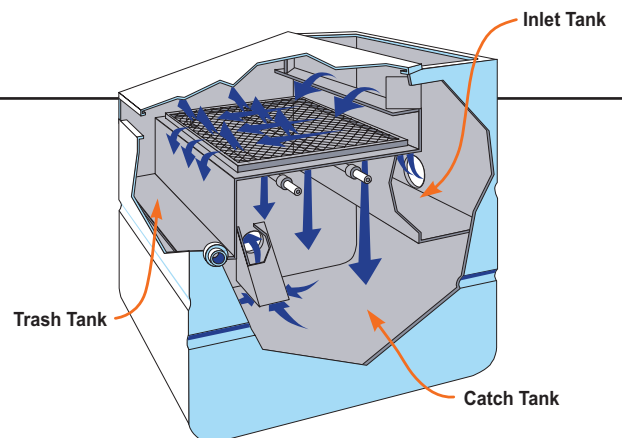
Backflush Recycle System

When used in conjunction with media filters, the Flow-Guard Backflush Recycle System filters and reuses 99% of the backflush water created by media filter systems. Perfect in areas where water is scarce or costly. Prevents many cultural and management problems caused by excessive backwash water. Completely assembled and mounted to base skid for easy installation. Automatic self-cleaning screen virtually eliminates maintenance. Stainless steel construction insures durability.

- Eliminates backflush disposal.
- Saves water.
- Easily added to any media filter system.
- Low maintenance.
- Stainless steel construction.
- Automatic self-cleaning.
- 550 gpm capacity.

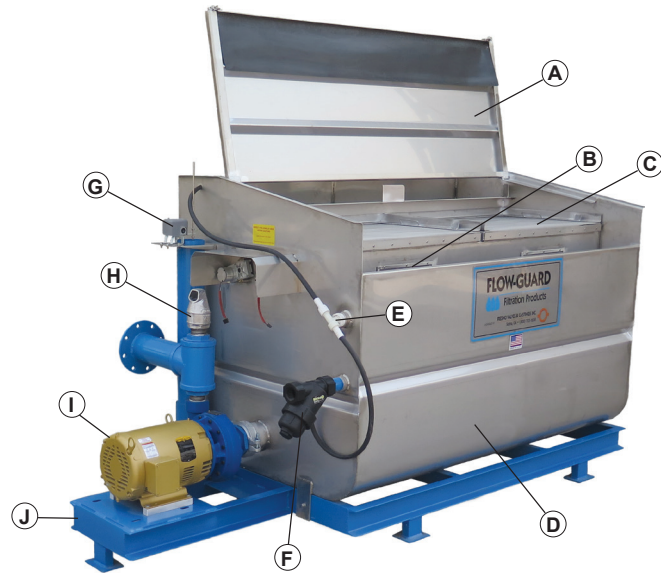
OPERATION

1. Backflush water enters recycle tank.
2. Contaminants collect on the screen as clean water passes into the tank.
3. Contaminants are forced to the front of the screen by:
 - a. Horizontal flow of water over the screen.
 - b. Rotating cleaning jets that spray water through the screen from below.
4. Contaminants accumulate in the trash-tank where, periodically they are removed.
5. Filtered water flows into the catch-tank.
6. Filtered water is pumped back to the inlet manifold of the media tank system to be used effectively for irrigation.



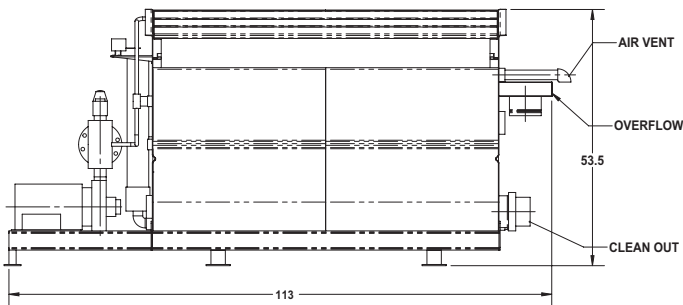
FEATURES

- A – Easy Access Cover
- B – Cleaning Jet Wands
- C – Removable Screen
- D – 304 Stainless Steel Tank - capacity 550 gallon
- E – Venturi Jet
- F – Y-Strainer
- G – Float Switch Assembly
- H – Air Vent
- I – Motor and Pump, 15 HP 350 GPM at 65 PSI
- J – Skid - Heavy Gauge Channel - Epoxy Coated

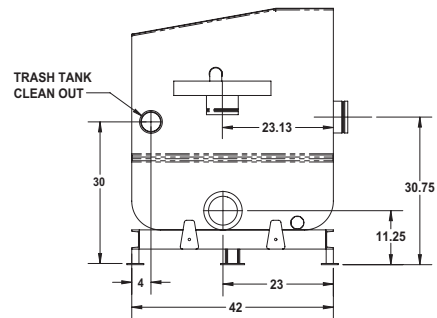


SPECIFICATIONS

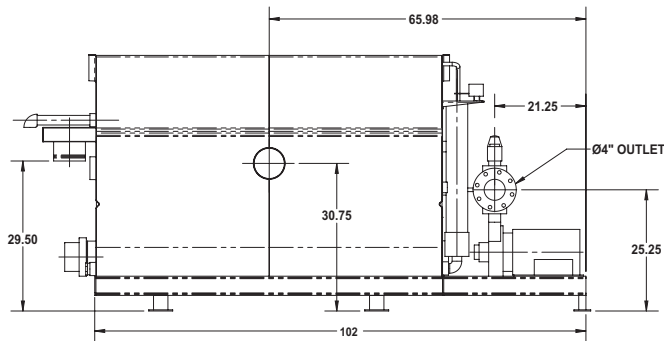
Front View



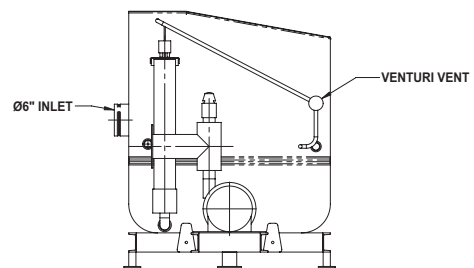
Right View



Rear View



Left View



Notes:
 Do not exceed recommended flow rates; in cases of extremely dirty water, lower flow rates are recommended. At least 30 psi is needed at the hydraulic motor for proper cleaning. Consult the manufacturer where available pressures are less than 30 psi. Allow at least an additional 5% flow consumption when calculating pumping requirements. All inlet/outlet connections are grooved. Standard screen material is 40 mesh. Other mesh sizes available.



Valves & Castings, Inc.
 Specifications subject to change without notice.

Fresno Valves & Castings, Inc.
 7736 East Springfield Avenue
 P.O. Box 40, Selma, CA 93662, U.S.A.
 (800) 333-1658
 www.fresnovalves.com